



V-HID Headlight Installation Instructions

Thank you for purchasing our **New** high quality easy to install Parts4PowerToys V-HID headlight kit for your Harley Davidson. The following installation instructions are as generic in nature and may or may not be exactly as illustrated below. However all connections and images of the HID kit are valid for all installations. **Note: Please read the instructions completely before starting the installation to insure that you fully understand all parts of the installation before starting.**

Step 1:

Remove the headlight and/or fairing as explained in the owners manual of your particular Harley model to access the Headlight assembly. This is required to install the new HID bulb and to facilitate installation of the wiring harness. Secure the motorcycle properly on the kick stand or motorcycle stand before starting.

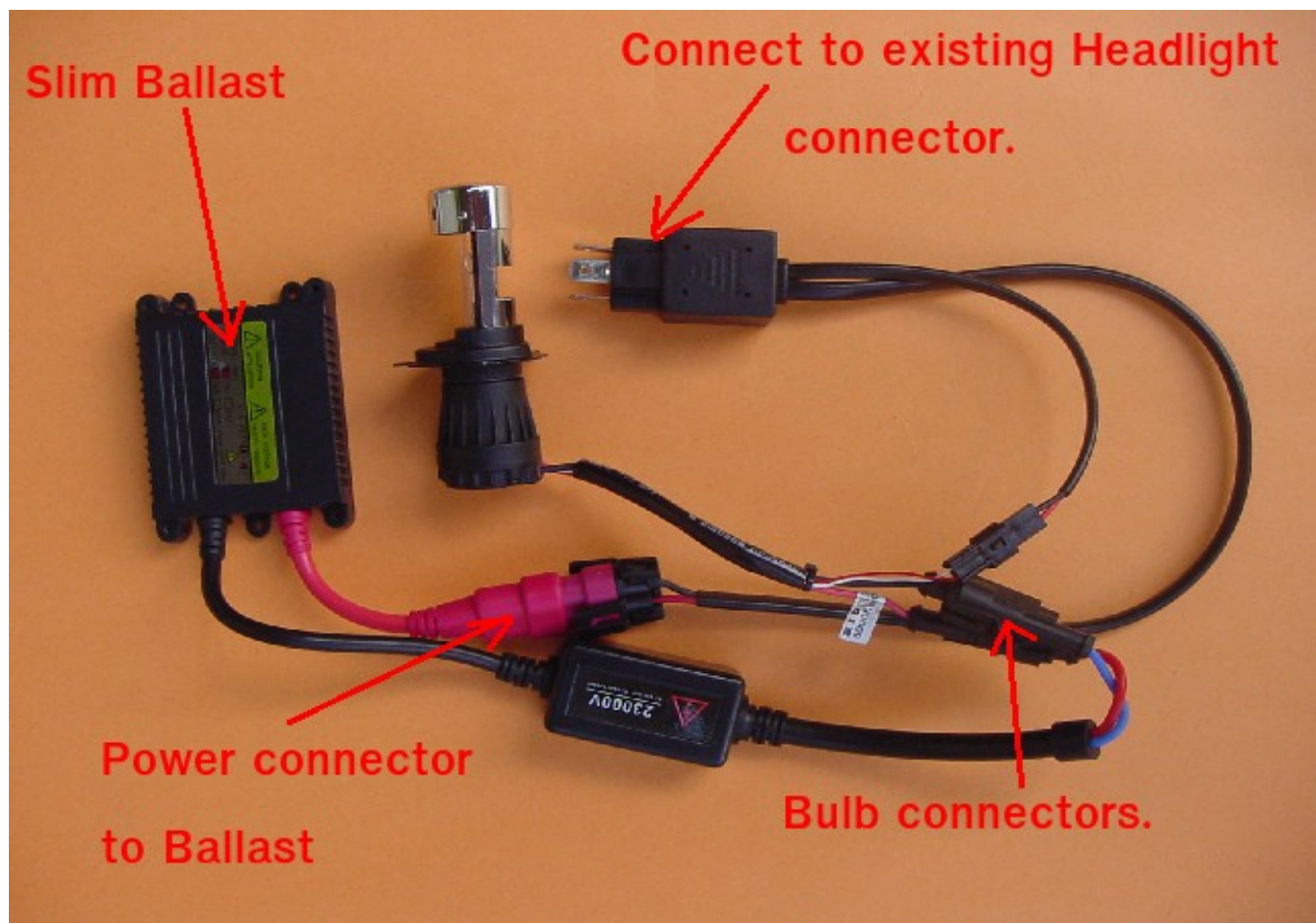
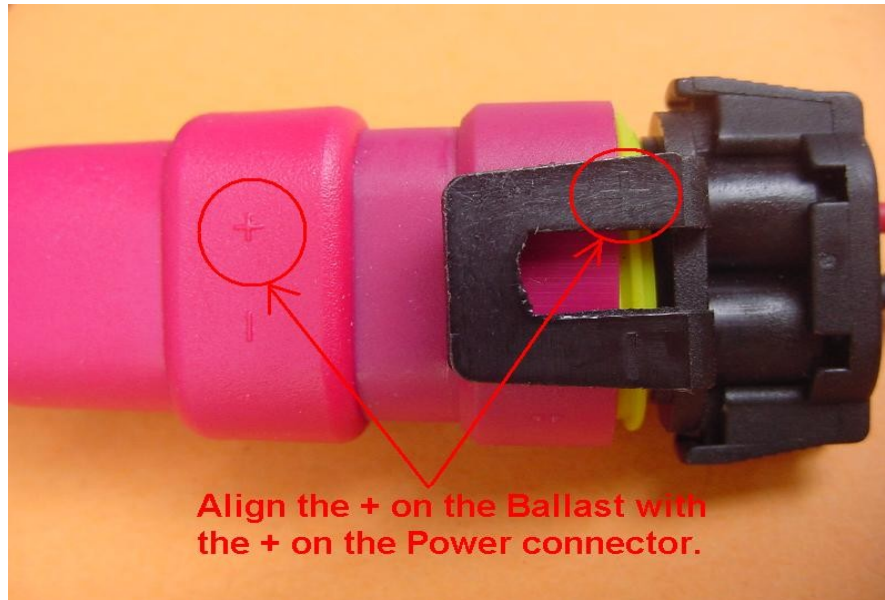


Figure A

Step 2:

Layout all the components in your new HID kit as shown in figure A. Identify all the connectors in the wiring harness and their respective connections to each component as shown in figures B & C. Once installed, all associate connectors will need to be connected together to complete the installation. Pay close attention to the ballast power connector orientation for the + and – connections indicated on the connectors. The connectors are polarized and need to be connected + to + and – to – . See figure B.

Note: Failure to follow this step may cause damage to the ballast.



**Align the + on the Ballast with
the + on the Power connector.**

Figure B

Step3:

Install the ballast as shown in Figure H in a location close to the headlight assembly. Study the images for your particular model. Use Velcro strips or double sided foam tape to securely mount the ballast. Pre-clean both surfaces with alcohol before adhering any Velcro strips or equivalent surface mounting pad. Take care to install the ballast securely to prevent damage due to vibration and weather exposure. Although the ballast is water tight, ensure that it is located to limit weather exposure and not interfere with the motorcycle fairing or steering motion.

Step 4:

Install the the wiring harness and secure it so that it is hidden from view and long enough to reach all it's respective connectors without over-stretching the cables. Install the large 3 prong connector plug from the HID cable assembly and connect to the existing H4 headlight connector that was previously attached to the old headlight bulb. This supplies all the power requirements and signals for high and low beam operation. Secure any remaining wires with zip ties to prevent cable damage from vibration and chaffing on sharp edges. ***No fuse is required since the motorcycle is already fused on the H4 bulb connector used to supply power and low/high beam signals.***

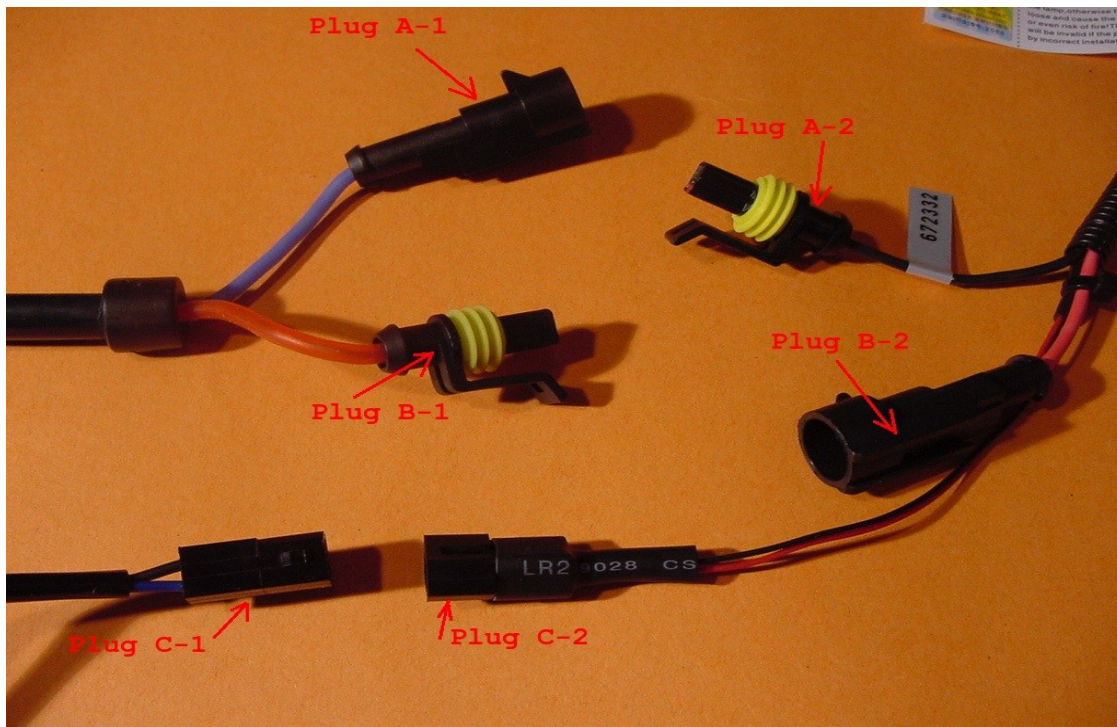


Figure C

Step 5:

Remove the old headlight bulb from the headlight assembly. Install the new HID bulb into the headlight assembly. See figure D. (Note on some Harley models, the inner reflector must be removed and modified to remove the reflector portion from the base plate. The base plate must be retained to allow a secure base for the new HID bulb to be securely reinstalled with the retaining clip. See figure E for modification to reflector and re-installation. Once the upper reflector is removed, reinstall the base portion and install the H4 HID bulb back into the headlight assembly.(see figure E & F).

Removal of the reflector is not always necessary but will enhance the beam pattern. Please verify the light pattern before seeing if you require this modification. In some cases the reflector can cause light pattern distortion. Modify the base rubber cover as shown in figure H. Not all models will require this modification if not equipped with a rubber base cover. On Road Glide models, the rubber base just needs to be split to allow bulb insertion see figure H.

Warning: DO NOT touch the HID bulb with your fingers. This can seriously reduce the life of the bulb and/or affect its color. If cleaning is required, use only a Q-Tip with alcohol to clean the bulb)

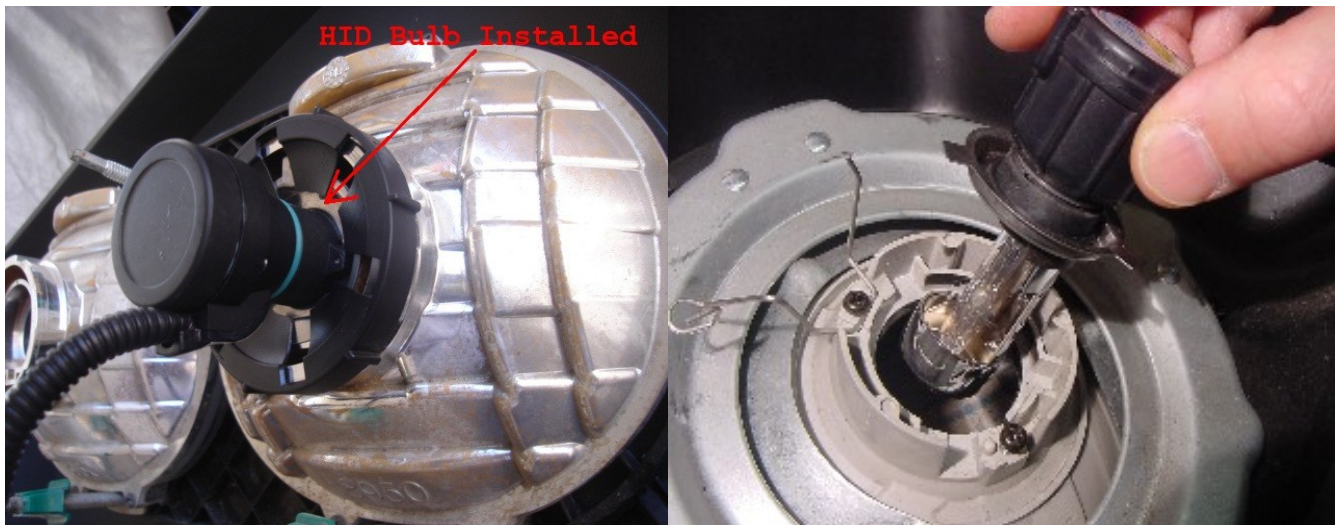


Figure D

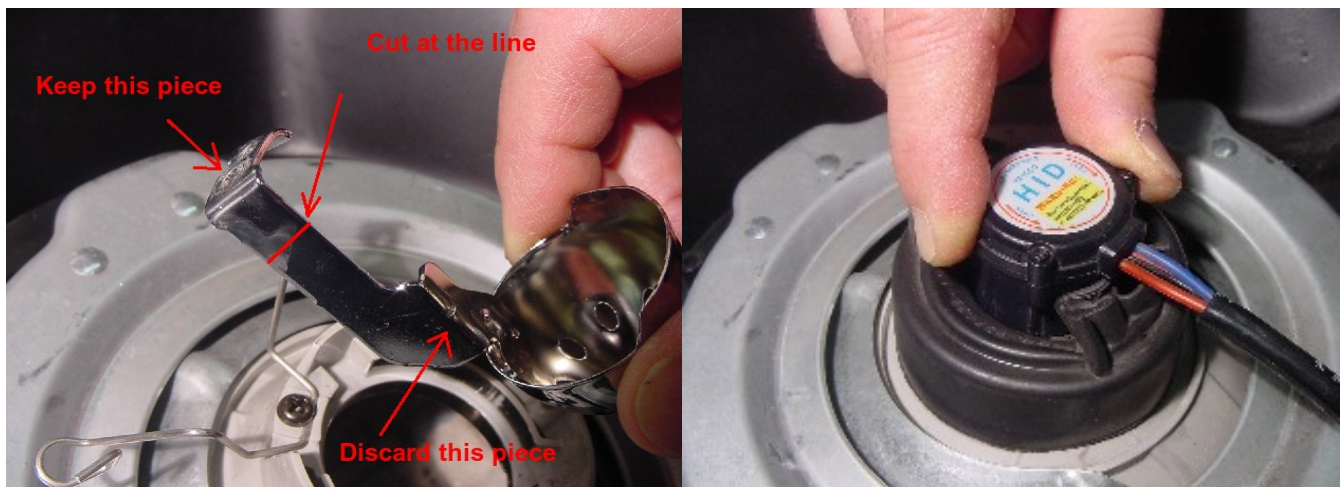


Figure E

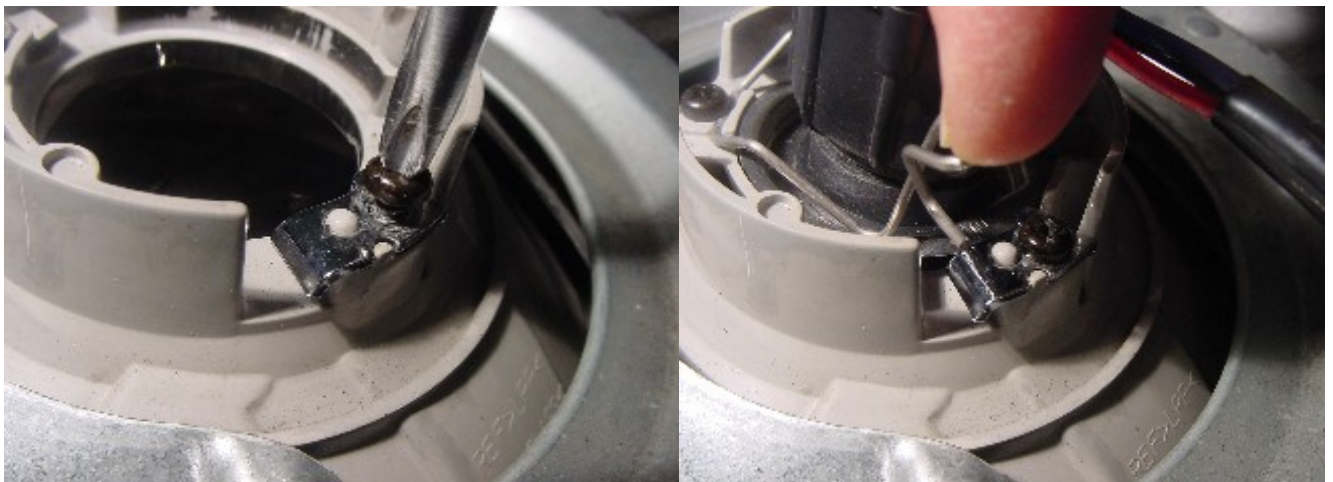


Figure F

More Installation pictures:



Figure G



Figure H

Step 6:

Once the HID bulb is installed, secure the base into the locked position before reinstalling the headlight assembly. See figure E and F. ***Note: Some models do not have locking ring.***

Step 7:

See figure G and H for more installation pictures to find your particular model. Before you finally secure tie-wrap and tape all connections to prevent damage due to vibrations and weather exposure. Turn the motorcycle ON and ensure that the HID is functioning properly in the Hi/Lo beam position. Once all is verified to work correctly, secure all wiring with tie-wraps and tape and reassemble fairing and headlight assembly and fairing as illustrated in the owners manual. If required, follow the owners manual for headlight beam adjustment if required to prevent blinding oncoming traffic in the event the headlight beam is reflected too high. The top of the low beam light should be no higher than 48 inches at 25 feet with someone sitting on the motorcycle and holding it level in the riding position as illustrated in figure I.



Figure I

Conclusion:

This completes the installation of the HID kit. If you have any technical questions, please send our technical team an email at tech@parts4powertoys.com

Note: There maybe times that the HID does not restart correctly after starting the motorcycle, in such an event, cycle the Hi/Lo beam switch to reset the HID. This HID kit is equipped with a built-in reset function if required.