



V-CreeG4 2014+ Headlight Installation procedure

Thank you for purchasing our V-CreeG4 kit for 2014+ Harley FLH touring models. Please follow the procedures below to install your new V-CreeG4 2014+ LED headlight kit.

- 1). Remove front Batwing fairing to gain access to headlight assembly. Once removed, disconnect both H9 and H11 connectors to the original headlight bulbs. Remove both original headlight bulbs and set aside. They will not be used. You may wish to keep them in your saddle bags as a backup in case one of the LED headlight fails during a road trip.
- 2). View image Figure 1 to install HIGH beam LED bulb assembly.



Figure 1

- 3). Once the HIGH beam assembly is installed, verify that the LED's are aligned from left to right as shown in Figure 2. LED Bulb can be installed wrong with LED's at a slant (45 degrees). So remove, turn and realign so that it is aligned as the image below. Turn LED bulb clockwise until locked in place.

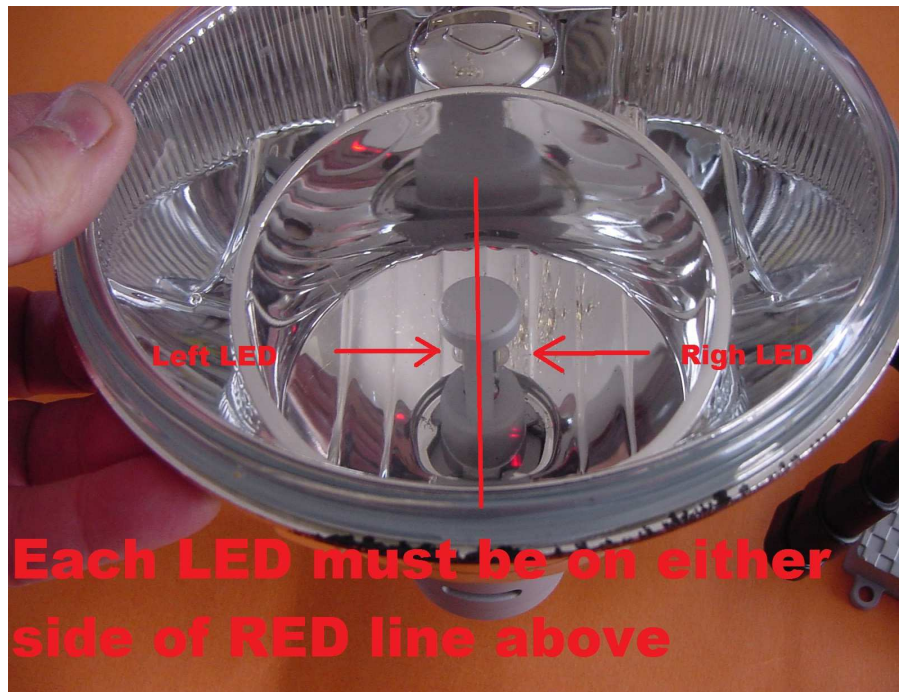


Figure 2

- 4). Install the LOW beam bulb as shown in Figure 3 below.



Figure 3

- 5). Make sure that the LED bulb is facing the lower half of the headlight housing as shown in the image below, Figure 4. The LED Bulb can be installed wrong with LED at a slant (45 degrees). So remove, turn and realign so that it is aligned as the image below. Turn LED bulb clockwise until locked in place. See also images at the end of this document for more closeup views.

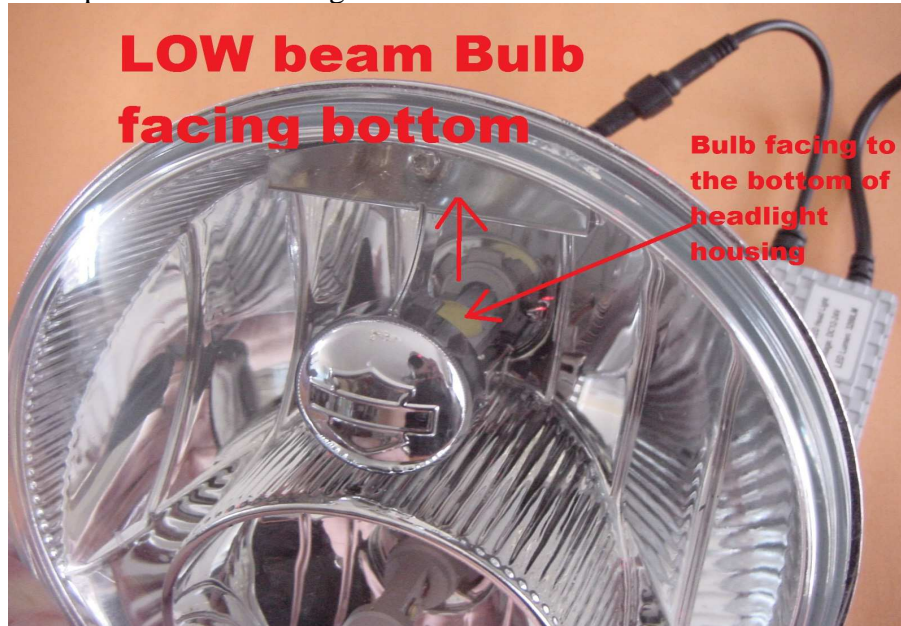


Figure 4

- 6). Once both LED bulbs are properly aligned and installed. The final assembly should look like the image below, Figure 5. Note that you must install Tie wrap as seen in the image to prevent bulbs from rotating due to vibrations from the motorcycle during operation. Also connect both the HIGH and LOW beam connectors to each bulb. Connectors are marked HIGH and LOW.

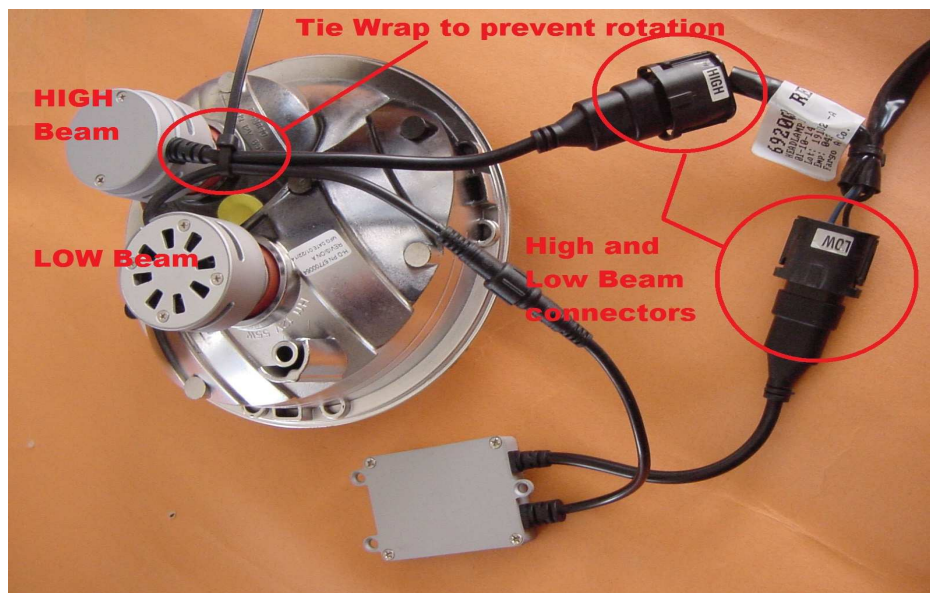


Figure 5

- 7). Make sure that when installing the LOW and HIGH beam connectors, you align the tabs before connecting them together. Once aligned, push them together until they snap closed. Squeeze the tabs on both sides as shown on the image below, Figure 6 to separate them if required.

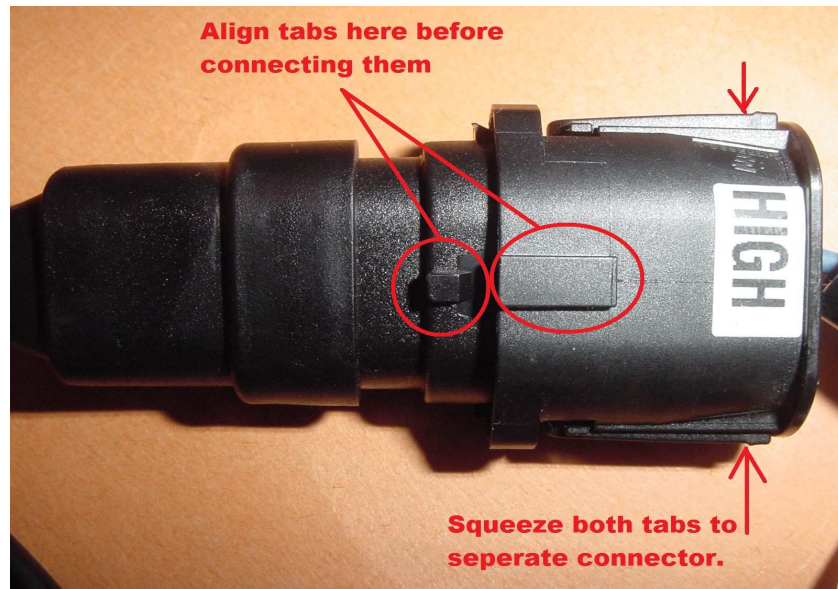


Figure 6

- 8). See image image below, Figure 7. This is how the completed installation should look prior to reinstalling the fairing. The ballast is supplied with a plastic Velcro attachment. Install the ballast on a smooth surface (clean surface with Alcohol prior to applying plastic velcro) on the inside of the batwing fairing. Make sure all wires are properly secured with tie wraps and no wires are under stress otherwise the wires will be damaged.

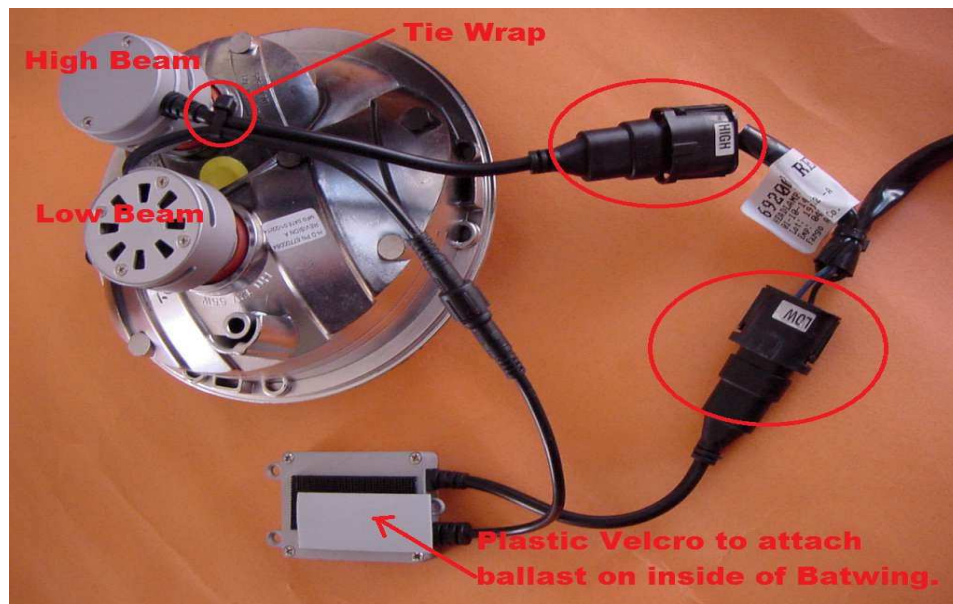


Figure 7

- 9). Failure to follow the above procedure will result in damage and thus will NOT be covered

under warranty. More images are provided below for your convenience to help in installation



